

# CLiDE

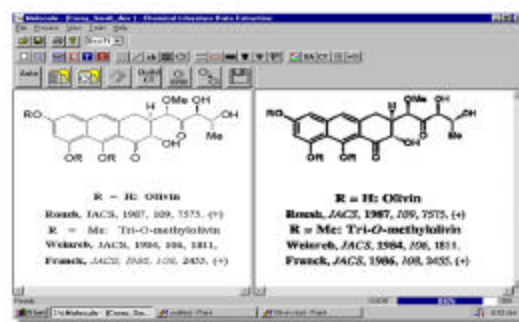
Chemical literature recognition software



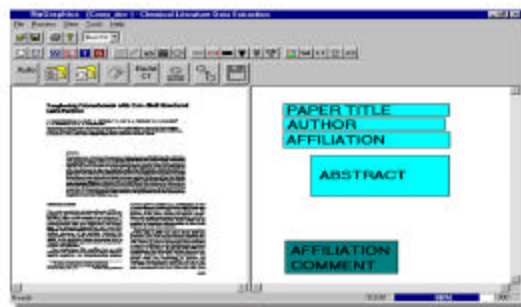
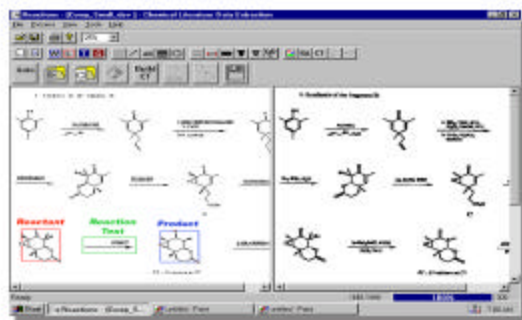
## OVERVIEW

CLiDE is the chemistry intelligent equivalent of Optical Character Recognition (OCR) software. Just as OCR can recognize characters from scanned images of printed text, CLiDE can recognize structures, reactions and text from scanned images of printed chemistry literature.

CLiDE, an acronym for Chemical Literature Data Extraction, is a document image processing software which extracts content of printed chemistry documents. The program processes whole pages of scanned chemical documents and extracts the maximum amount of information from both the text and the graphic regions.



## FEATURES & BENEFITS



- Extracts chemical structure and text information from printed/scanned pages and stores the information in various forms (e.g. MOL file, ChemDraw).
- CLiDE also extracts reaction information. Reaction information can be entered into databases automatically, saving hours of redrawing.
- Extracts generic structure information from graphics and text. CLiDE will expand condensed generic structures so they can be entered into your DB either expanded or condensed.
- CLiDE recognizes and extracts page layout information. Bibliographical information (e.g. title, author etc.) is conveniently extracted automatically thus saving time cataloging and organizing your DB.